



**Michelle Kavarnos**  
0785626225  
michelle.kavarnos@saproperty.com



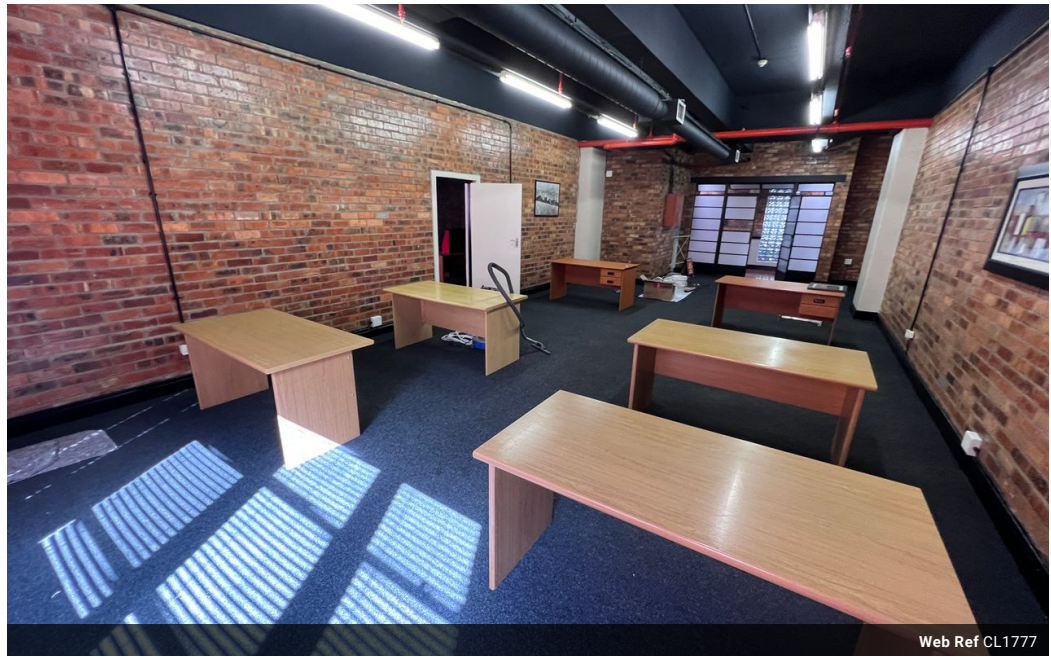
**Commercial Division**  
078 562 6225

commercial@saproperty.com

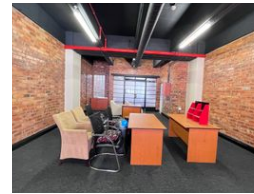
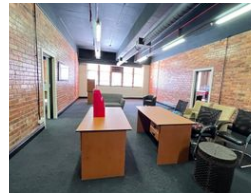
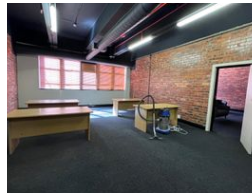
Contact Cape Town

021 2000145

SAPROPERTY.COM House, 9 Boundary Road, Waterford Place, Century City, Cape Town



Web Ref CL1777



**R23,660 pm**

**Gross Monthly Rental R23,660 Excl. VAT**

0 0

### Office To Let In The Heart Of Cape Town's CBD

Located on Bree Street, one of Cape Town's most popular streets, Manhattan Place is in the centre of the Cape Town CBD and has easy access to the N1 and N2 highways as well as public transport hubs. Surrounded by amenities within walking distance, there are multiple restaurants, coffee shops, and retail stores.

Manhattan Place is a commercial and residential building with office space on multiple floors. There is 24-hour access-controlled security as well as each floor has tag access control. The building has backup generators.

The following offices are also available:

- Unit 409 - 110sqm
- Unit 410 - 99sqm
- Unit 413 - 92sqm

### Features

**Zoning** Commercial

**Sizes**  
Floor Size 182m<sup>2</sup>

