



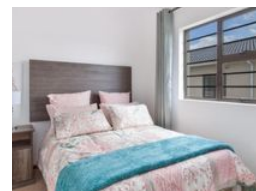
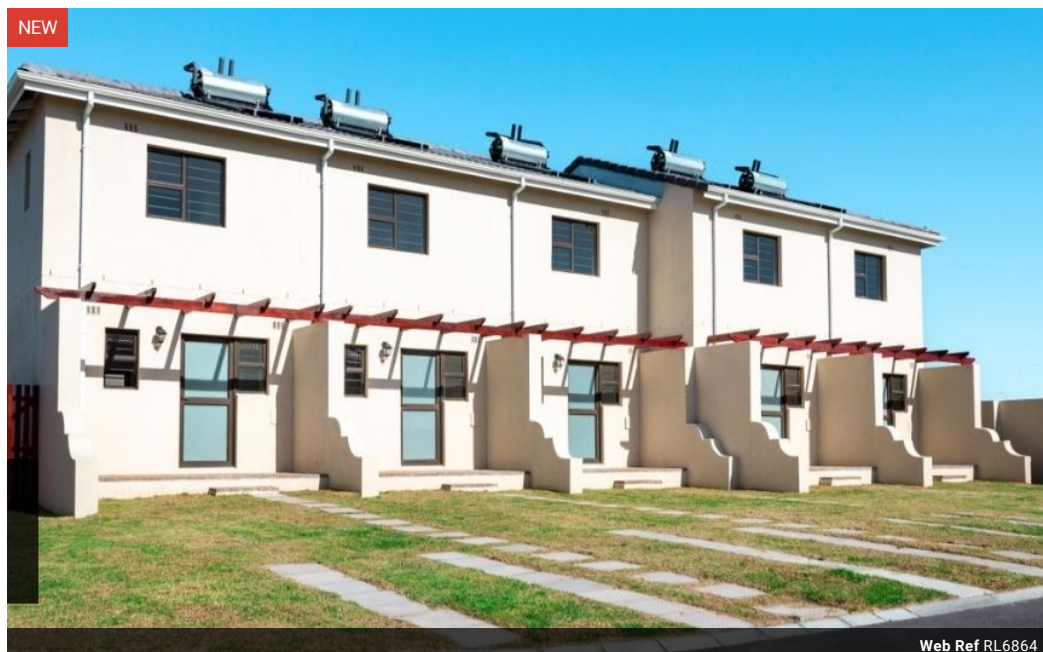
**Annastasia Mazarire**  
0780242970  
annastasia@saproperty.com

Contact Cape Town

021 2000145

SAPROPERTY.COM House, 9 Boundary Road, Waterford Place, Century City, Cape Town

## 2 Bedroom Duplex For Sale in Bardale Village



**R899,900**

🛏 2 🚿 1

**Monthly Bond Repayment** R9,288.66  
Calculated over 20 years at 11% with no deposit.

**Transfer Costs** R28,244.00 **Bond Costs** R21,450.00  
These calculations are only a guide. Please ask your conveyancer for exact calculations.

### Brand New Stylish 2 Bedroom Townhouses for sale in Bardale Village

From First-Time Buyers to Savvy Investors – A Modern Opportunity Awaits!

Prices from R899,900 to R924,900 depending on floor sizes and additional improvements.

Floor sizes from 50sqm to 55sqm.

Welcome to BARDALE, where contemporary living meets thoughtful design. These brand-new, modern 2-bedroom townhouses offer the perfect blend of style, comfort, and convenience – ideal for first-time home buyers, young couples, professionals, or those looking to expand their rental investment portfolio.

- >Open-plan kitchen layout
- >Custom finishes – Choose from three designer options for flooring, kitchen cabinetry, and cupboards
- > Modern bathroom with sleek sanitary ware and a walk-in shower
- >Secure, lock-up-and-go lifestyle
- >Secure parking
- >All costs included

Each home features spacious bedrooms, contemporary fittings, and a stylish

### Features

Interior		Exterior		Sizes	
Bedrooms	2	Carports / Parkings	2	Floor Size	50m <sup>2</sup>
Bathrooms	1	Security	Yes	Land Size	144m <sup>2</sup>
Kitchens	1	Pool	No		
Recep. Rooms	1	Views	False		
Furnished	No				