



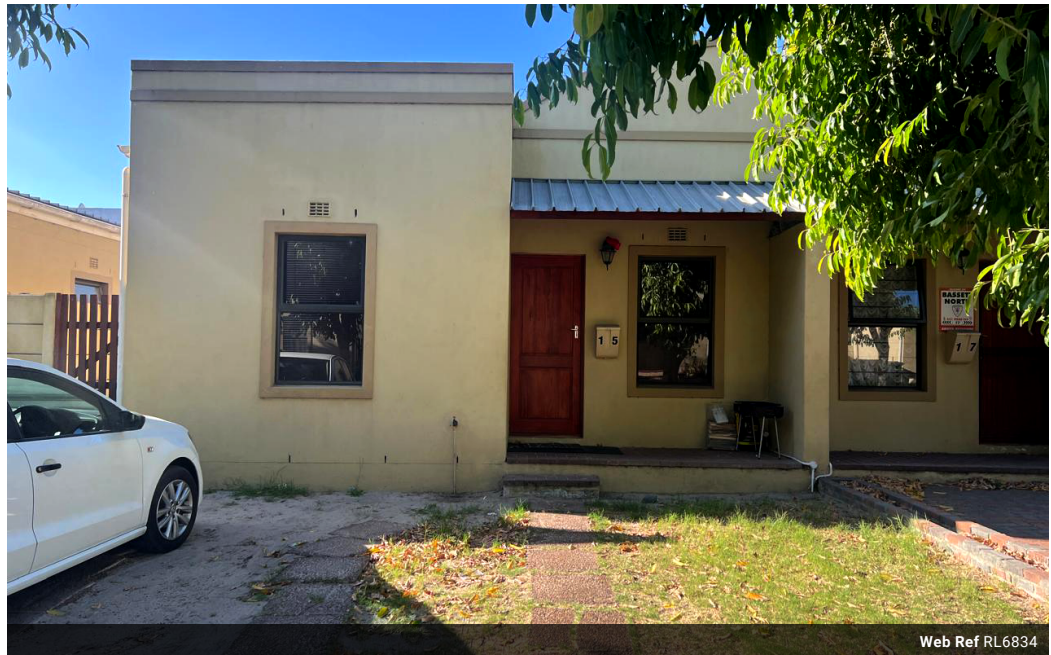
**Deirdre Press**  
0722510727  
deirdre.press@saproperty.com

Contact Cape Town

021 2000145

SAPROPERTY.COM House, 9 Boundary Road, Waterford Place, Century City, Cape Town

2 Bedroom Freehold For Sale in Bardale Village



Web Ref RL6834



**R849,000**

🛏️ 2 🚿 1

**Monthly Bond Repayment** R8,763.28  
Calculated over 20 years at 11% with no deposit.

**Transfer Costs** R28,244.00    **Bond Costs** R21,450.00  
These calculations are only a guide. Please ask your conveyancer for exact calculations.

**Cozy 2 Bedroom**

An Excellent Investment Opportunity, Discover a practical and well-maintained property in the sought-after Bardale Village Phase 2. This home presents a fantastic opportunity for investors or those looking for a secure and convenient residence. Featuring:

- \* 2 Bedrooms
- \* 1 bathroom
- \* 2 Parking spaces
- \* Solar powered geyser
- \* 24 hour secured complex
- \* Optional 2 year lease agreement in place

This property offers comfortable living in a well-managed estate. Benefit from the security and amenities offered by Bardale Village, ensuring a solid investment for the future. With easy access to schools, shopping centres, communal parks and major highways, Make this your perfect dream home and enjoy the peaceful lifestyle that...

**Features**

Interior		Exterior	
Bedrooms	2	Carports / Parkings	2
Bathrooms	1	Security	No
Kitchens	1	Pool	No
Recep. Rooms	1	Views	False
Furnished	No		

