

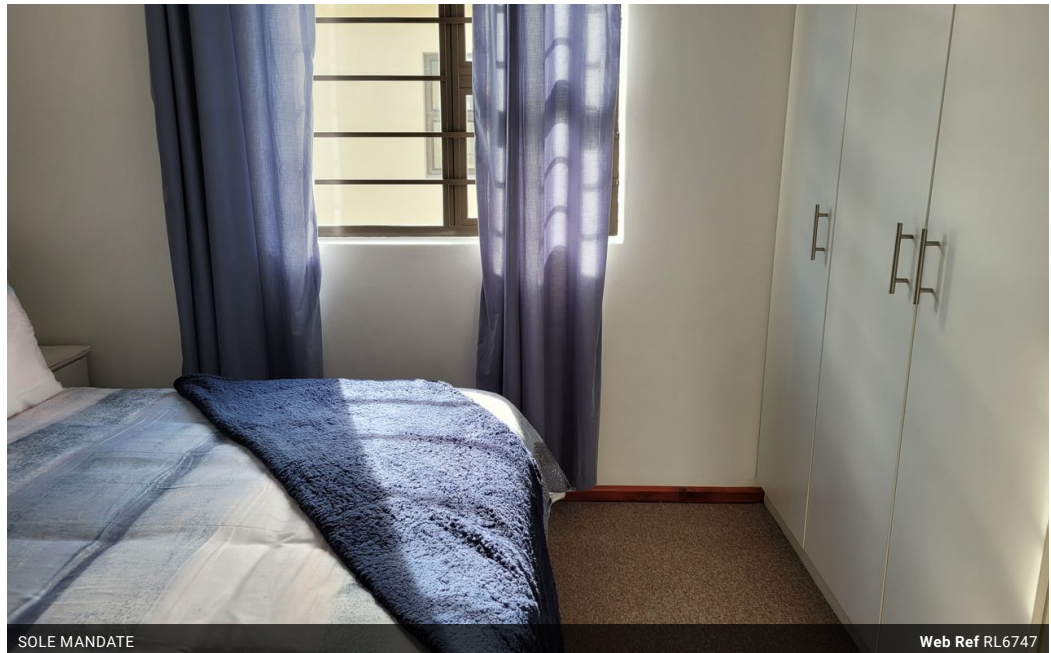


Winston Sives
0793741554
winston@saproperty.com

Contact Cape Town

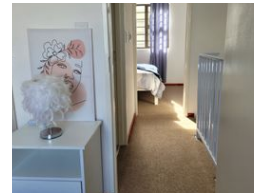
021 2000145

SAPROPERTY.COM House, 9 Boundary Road, Waterford Place, Century City, Cape Town



SOLE MANDATE

Web Ref RL6747



R911,500



Monthly Bond Repayment R9,408.40
Calculated over 20 years at 11% with no deposit.

Transfer Costs R30,412.00 **Bond Costs** R23,335.00
These calculations are only a guide. Please ask your conveyancer for exact calculations.

Monthly Levy R600 **Monthly Rates** R280

YOUR BRAND NEW HOME HAS YOUR NAME ON IT!!!

The well known Bardale Village security complex boast of it's successful existence. The new phase 5C is specifically designed for first time home buyers who does not have a big family unit.

Phase 5 is a security complex with manned security, electric fencing and alarm systems. The finishes are modern and ready to move in. The development has a play park for the kids as well to give you peace of mind as well.

Contact me for your personal viewing.

Your new home is ready for occupation!!!

Features

Pets Allowed Yes

Interior
Bedrooms 2
Bathrooms 1
Kitchens 1
Recep. Rooms 1
Furnished No

Exterior
Security Yes
Pool No
Views False

Sizes
Floor Size 55m²
Land Size 90m²

Extras
Electric Fencing Open Plan Kitchen